

THE CARE OF THE WOUNDED.

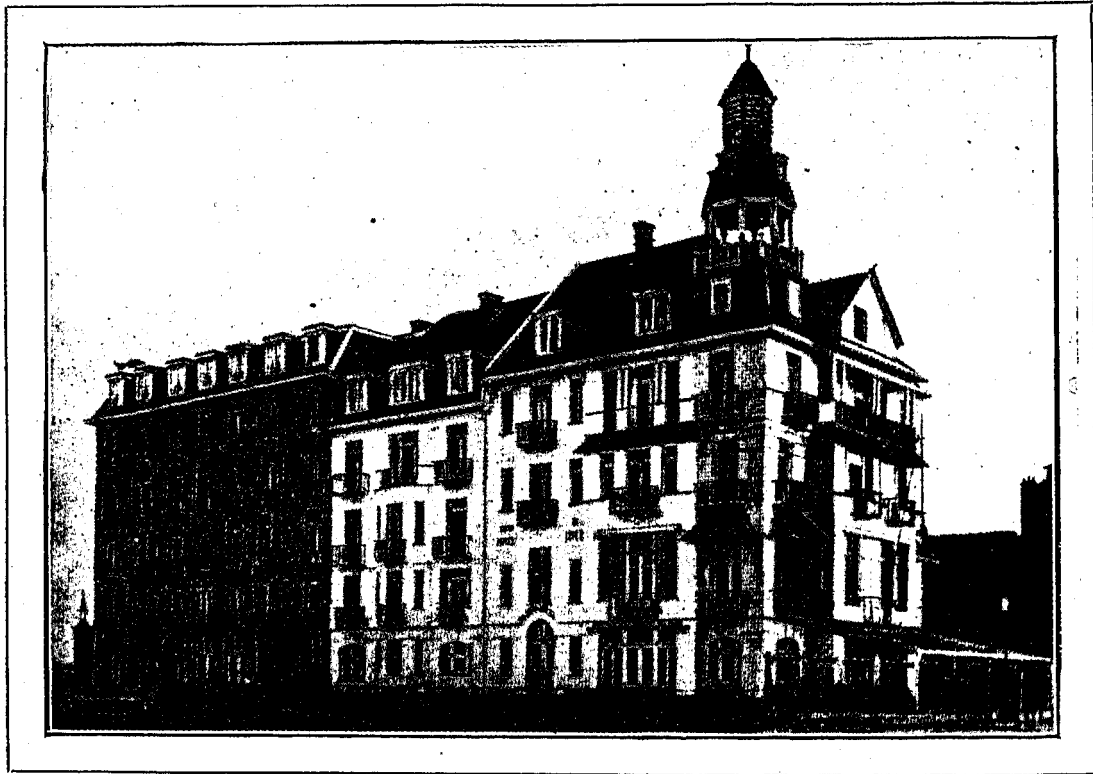
The King and Queen, attended by the Lady Ampthill and Commander Sir Charles Cust, Bart., R.N., visited the sick and wounded soldiers who have returned from the Front, at the Reading War Hospital, Oxford Road, Reading, last Saturday afternoon.

The Travelling X-ray Motor Ambulance of the Committee of the London Units of the Scottish Women's Hospitals N.U.W.S.S., which is about to proceed to the Front, in charge of Dr. Savile, was on view in the beautiful grounds of Bedford

need is most urgent will no doubt prove most welcome.

The Ambulance or Van, which with its outfit has cost £1,100, and weighs 30 cwt., is a model of what may be compressed into a small space. In the front of the van is the Dark Room, which is equipped with developing dishes, fixing tank, washing tank, and draining rack, with a lead-lined sink; it is provided with a 20 gallon water supply, under pressure, and is lighted by either a Day or Electric Light Dark Room Lamp. An efficient system of light-tight ventilation is also provided.

The X-Ray Couch, which packs into the side of the van, is fitted with enclosed Type tube box, insulated with 3mm. rubber protective throughout



LE GRAND HÔTEL DE L'OcéAN,
DR. DEPAGE'S HOSPITAL AT LA PANNE, BELGIUM.

College, Regent's Park, by courtesy of the Principal, on Thursday, July 29th, and Friday, July 30th, by invitation of the Lady Cowdray, when many people availed themselves of the opportunity of seeing this valuable aid in the treatment of the wounded. The Ambulance, which will work under the French Red Cross, has a staff of four women, the doctor, two orderlies and the driver. The uniform of the staff consists of a khaki-coloured coat and skirt with patch pockets, faced with the Gordon tartan, and bearing the distinctive thistle of Scotland. As the supply of expert radiographers is short, this Ambulance, which can readily move from place to place where the

square-leaved diaphragm, and a special design of protective apron attached to the couch, and with mirror device for protection during screening.

The tent which is carried, and which, when erected, forms the entrance to the van, forms a room 12 ft. long and 8 ft. wide, and is water-tight and practically light-tight. The whole of the equipment is erected in this tent.

The method of accurately locating both the position, and the depth of bullets by means of a fluorescent screen or an X-ray photograph was demonstrated.

The ambulance, which will be known as the "Ambulance Flottante," was equipped

[previous page](#)

[next page](#)